

ERIBÉ®

CHAPTER ONE : SS 2027 SUMMER EDIT







Welcome to
ERIBÉ Spring Summer 2027
Chapter One - *Summer Edit*

Oh, how delighted we are to have you here. Thank you.

At ERIBÉ, every season begins with a feeling; a flicker of light over a hill, the wild tangle of heather underfoot, the peculiar pink of a Scottish sky at ten o'clock at night. And from these small precious moments, we knit stories, stories from the land we live on.

To our wonderful stockists — our cherished partners, champions, and fellow storytellers — thank you for carrying our colours, our craft, and our spirit out into the world. It's because of you that these little pieces of Scotland find their way into wardrobes and hearts across the globe.

Spring Summer 2027 feels especially alive. This is our biggest Spring Summer collection yet — a glorious tumble of familiar favourites alongside fresh new silhouettes, all wrapped up in colour stories designed to stir joy, spark curiosity, and feel utterly irresistible in-store. This season, we've wandered deep into Scotland's spring and summer landscapes and gathered their purest offerings: peaty earth, blooming wildflowers, sea grasses dancing in the wind, ancient forests waking from winter, and those endless northern skies that never quite darken.

Each palette portrays a fleeting Scottish moment: captured, spun, and knitted. This collection is Scotland in motion. Romantic, tender, bright, moody but wonderful. We cannot wait to see how you bring it to life. A little piece from our home to yours. Join us in our journey to bring joy into this world.

With love, colour, and woolly wonder,

Rosemary Eibé

Founder & Creative Director
ERIBÉ Knitwear



OUR YARNS

ERIBÉ is all about the people involved; from our wonderful in-house team, wool producers, spinners, mills and suppliers, to our agents, buyers and customers. We place great importance on every person involved in our supply chain, ensuring the highest standards of ethical production throughout.

All our woollen yarns are:

Ethically sourced from leading producers who handle the fibre with passion and care at every stage of the process.

Mulesing free, protecting animal welfare and preventing “fly strike” through humane methods.

Dyed according to EU REACH and OEKO-TEX® regulations, ensuring safety for people and the environment.

Majority are certified to RWS (Responsible Wool Standard) and Control Union standards.



KIND TO ANIMALS



ENVIRONMENTAL & SUSTAINABLE



QUALITY ASSURED



ALWAYS TRACEABLE



SOCIALLY RESPONSIBLE



NON-MULESED WOOL



LINEN & ORGANIC COTTON

Our Stichill garments are made with a beautiful naturally organic Linen and Cotton blend. Our naturally organic Linen is a natural wellness fibre. It is hypo-allergenic and has antibacterial properties. Its high hygroscopic and thermo-regulating powers all combine to make it not only an ultimate comfort and wellness garment but also suitable for sensitive skin types. The cultivation of Linen Flax improves the soil and encourages biodiversity.



MERINO LAMBSWOOL

The Merino Lambswool we use for our ALPINE, CORRY and MONTROSE styles is spun in Yorkshire by a family-owned company who have been spinning yarn for over 200 years. The fibre is dyed before it is spun, a gentle process that gives a superior colour result and beautifully soft handle. They source natural fibres that meet the highest standards of animal welfare and take sustainability seriously. Their Yorkshire mill uses energy-efficient technology to reduce power consumption, and all wood, paper, plastic, metal and fibre waste is fully recycled.

SUPERFINE LAMBSWOOL & EXTRAFINE MERINO

KINROSS garments along with our new SOLWAY LACE styles, are made using a premium, Scottish-spun, fully traceable, and guaranteed non-mulesed RWS Certified superfine Lambswool. This yarn is soft, lightweight, and sustainably produced. The spinner uses water drawn from nearby Loch Leven. The dyes used are environmentally friendly, and after dyeing, the water is thoroughly cleaned and returned to the loch – a protected nature reserve for birds and fish. VALA LACE garments are crafted from a luxurious extrafine Merino, offering an even softer and lighter finish. This yarn is sourced from exceptionally fine Merino wool for comfortable wear in all weather conditions. It is also Responsible Wool Standard Certified, fully traceable and ethically produced.



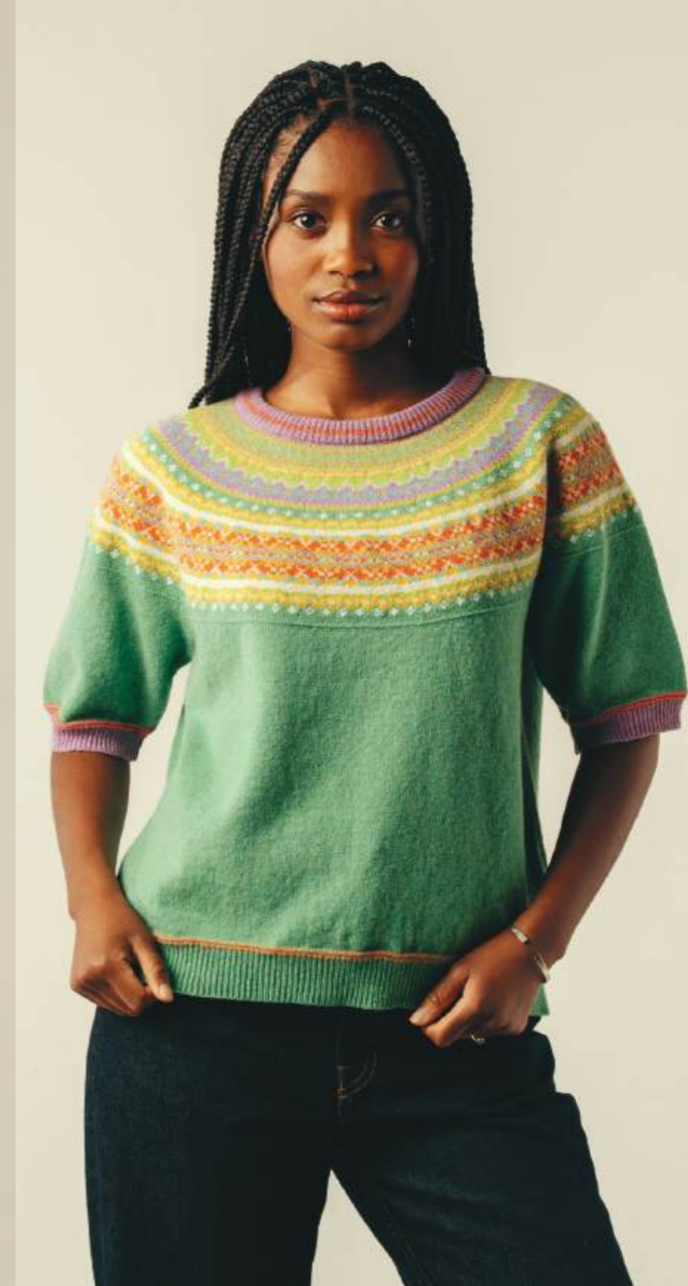
LUXURY SOFT YARNS

The angora used in our classic ALPINES is sourced responsibly through partners who ensure ethical and sustainable farming practices, with full traceability and high standards of animal welfare.

The ALPINE

NEW STYLE

The Half Sleeve Sweater





STICHILL LONG SLEEVE SWEATER / LEMONADE
STICHILL SHORT SLEEVE SWEATER / CALAMINE

The STICHILL

Our Stichill collection is a beautiful 75% Linen and 25% Organic Cotton blend to bring you elegant, natural fibre, lightweight garments for warmer days. Inspired by traditional handknitting textures, this charming collection uses Cotton and Linen to give a crafted, irregular texture with softly ruched organic cotton fabric edging for an individual design.

Available as a sleeveless top, short sleeve and long sleeve. Medium weight crisp-touch linen/cotton with fine cotton fabric trim details. Machine washable.

Stichill is a village and civil parish in the historic county of Roxburghshire, a division of the Scottish Borders. Situated 2 miles north of the old Burgh of Kelso, Stichill lies north of the Eden Water and 5 miles from the English Border at Coldstream.





STICHILL SLEEVELESS TOP

STYLE No: V4337

75% Linen 25% Organic Cotton

SIZES: XS / S / M / L / XL

REGULAR FIT

Inspired by our handknits this round neck top has texture detailing and is edged with fine organic cotton fabric for an individual design.

AVAILABLE IN 7 COLOURS.

MODEL IS SIZE 6-8UK, WEARING SIZE M



STICHILL LONG SLEEVE SWEATER

STYLE No: P4339

75% Linen 25% Organic Cotton

SIZES: XS / S / M / L / XL

REGULAR FIT

Inspired by our handknits this flattering round neck, long sleeve sweater has texture detailing. It is edged with fine organic cotton fabric for an individual design.

AVAILABLE IN 7 COLOURS.

MODEL IS SIZE 8UK, WEARING SIZE M



STICHILL SHORT SLEEVE SWEATER

STYLE No: P4338

75% Linen 25% Organic Cotton

SIZES: XS / S / M / L / XL

REGULAR FIT

Inspired by our handknits this round neck top has texture detailing and is edged with fine organic cotton fabric for an individual design.

AVAILABLE IN 7 COLOURS.

MODEL IS SIZE 10-12UK, WEARING SIZE M



The STICHILL Colours

SLEEVELESS TOP / SHORT SLEEVE SWEATER / LONG SLEEVE SWEATER / CARDIGAN



Lemonade



White



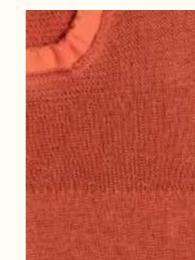
Calamine



Linen



Navy



Oxide



Caspian



STICHILL V-NECK CARDIGAN

STYLE No: C4375

75% Linen 25% Organic Cotton

SIZES: XS / S / M / L / XL

REGULAR FIT

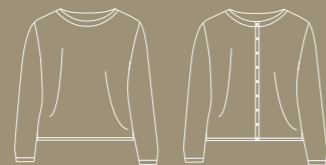
Inspired by our handknits this long sleeve cardigan in linen/organic cotton has pretty cable and fairisle pattern details. The rib hems have a contrasting colour making it a versatile piece to pair with many outfits.

AVAILABLE IN 6 COLOURS.

MODEL IS SIZE 6-8Uk, WEARING SIZE M

The SOLWAY LACE

Taken from our 40-year knit archive, the Solway Lace combines romance with luxurious softness and warmth next to the skin. These slim-fitting designs create an elegant yet contemporary look, while the garments quickly mould to your body shape. Easy to care for, making them a practical and beautiful addition to any collection.



SOLWAY LACE SWEATER

STYLE NO: P4417

100% Superfine Lambswool / 5gg

MADE IN EU

SIZES: S / M / L / XL

SLIM FIT

A knitted lace pullover combining romance with luxurious softness and warmth. Designed to be slim-fitting for a contemporary look.

AVAILABLE IN 8 COLOURS.

MODEL IS SIZE 8UK, WEARING SIZE M



SOLWAY LACE CARDIGAN

STYLE NO: C4416

100% Superfine Lambswool / 5gg

MADE IN EU

SIZES: S / M / L / XL

SLIM FIT

A knitted lace cardigan combining romance with luxurious softness and warmth. Shell buttons and a slim-fitting design create an elegant yet contemporary look.

AVAILABLE IN 8 COLOURS.

MODEL IS SIZE 8UK, WEARING SIZE M



The SOLWAY LACE Colours

CARDIGAN / SWEATER



Chakra



Greensand



Oatmeal



Sari



Orange Gloss



Soft Denim



Punk



Punch

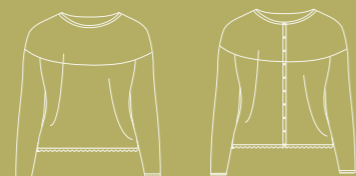


SOLWAY LACE SWEATER / GREENSAND

The VAILA LACE

Taking inspiration from vintage Shetland hand-knitted fine lace shawls, these romantic and nostalgic lace garments are a new and unique design that follows in the footsteps of ERIBÉ's iconic yoke patterns. Resembling delicate hand-knits, each intricate piece is crafted from extra-fine, lightweight Merino wool for a luxurious, airy feel.

The collection is named after Vaila, a beautiful and remote island in Shetland, north of Scotland. Situated south of the Westland peninsula of the Shetland Mainland, Vaila covers 327 hectares and is home to just one house. Rising 95 metres at its highest point, the island hosts an organic sheep farm and is also known for its mountain hares, a true reflection of Shetland's wild and unspoiled charm.



VAILA LACE SWEATER

STYLE NO: P4382

100% Merino Wool / 12gg

MADE IN EU

SIZES: S / M / L / XL / XXL

SLIM FIT

A fine lace yoke sweater, round neck with long sleeves. Beautifully made with fine merino lace knit, featuring scalloped edging on the collar, cuffs and rib, with yoke detail.

AVAILABLE IN 8 COLOURS.

MODEL IS SIZE 8UK, WEARING SIZE M



VAILA LACE CARDIGAN

STYLE NO: C4337

100% Merino Wool / 12gg

MADE IN EU

SIZES: S / M / L / XL / XXL

SLIM FIT

A fine lace yoke round neck cardigan with long sleeves and pearl button detailing. Beautifully crafted with fine merino lace knit, featuring scalloped edging on the collar, cuffs, and hem, complemented by yoke detailing.

AVAILABLE IN 8 COLOURS.

MODEL IS SIZE 8UK, WEARING SIZE M



The VAILA LACE Colours

SWEATER / CARDIGAN



White



Glacier



Lemon



Oatmeal



Petal



Lilac



Green Lichen



Soft Denim



VAILA LACE CARDIGAN / LEMON
VAILA LACE SWEATER / GREEN LICHEN



The CORRY

Our Luxe-Leisure Corry V-Neck Tank Top is crafted from the softest 100% Merino lambswool, spun in Yorkshire. Designed for comfort and versatility, Corry garments are perfect for wearing on any occasion and showcase ERIBÉ's vibrant colours without pattern, adding diversity to your store display.

With sustainability at its heart, these pieces are designed to replace cotton basics and encourage conscious wearing. Wool's breathable qualities can regulate body temperature and requires less frequent washing. The source material ensures sustainability, and a far lower environmental footprint than typical cotton alternatives.





CORRY V-NECK TANK TOP

STYLE NO: V4232

100% Merino Lambswool / 7gg

MADE IN SCOTLAND

SIZES: XS/S, S/M, M/L, L/XL, XL/XXL

SLIM FIT / RELAXED FIT

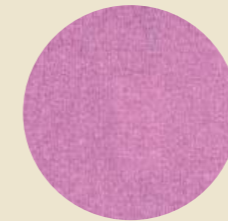
Minimalist and functional, this V-neck Tank top features two pockets and is perfect to layer over a dress, shirt, or t-shirt for added warmth and effortless style. The dual-size design allows you to choose between slim fit or regular fit, offering versatility for every wardrobe.

AVAILABLE IN 12 COLOURS.

MODEL IS SIZE 10-12UK, WEARING SIZE M

The CORRY Colours

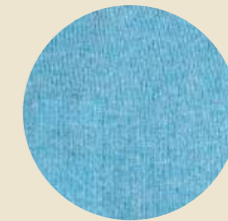
V-NECK TANK TOP



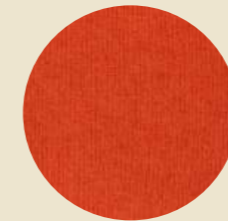
Starburst



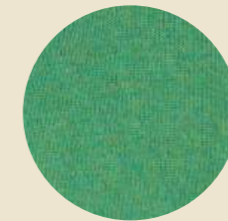
Luscious Lime



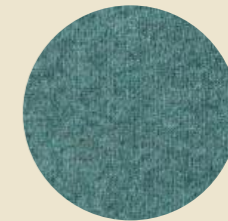
Montego Bay



Afterglow



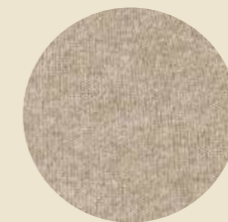
Hebe



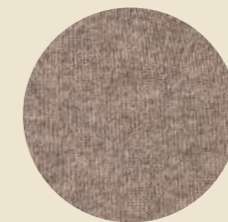
Caspian



Orchard



Linen



Vole



Driftwood



Seaweed



Regatta



The MONTROSE

A relaxed-fit knit in an eye-catching design and solid colours, easy to wear and featuring unique vertical pattern details such as Guernsey rib, tweed textures and the special 'Milkchurn' Fairisle pattern. Made from 100% Merino lambswool, this knitting technique creates a flattering drape, offering both comfort and individuality





MONTROSE TOP

STYLE NO: P4397

100% Merino Lambswool / 7gg

MADE IN EU

SIZES: SHORT (FRONT BODY LENGTH: 52.5cm)

TALL (FRONT BODY LENGTH: 58cm)

OVERSIZED FIT

A must-have garment that you can throw on for effortless comfort and style. This versatile hip-length top features a loose, flattering draped shape and short sleeves with subtle Fairisle and tweed pattern details. It offers lightweight warmth and a universally flattering fit. Available in two sizes, designed according to height.

AVAILABLE IN 6 COLOURS.

MODEL IS SIZE 8UK, HEIGHT 168CMS, WEARING SIZE M

The MONTROSE Colours

MONTROSE TOP



Bluebell



Primrose



Mushroom



Fern



Bracken



Hunter



KINROSS WAISTCOAT / LATTE

The KINROSS

Inspired by the natural beauty of our Scottish landscape and traditional patterns from Shetland and Fair Isle. Kinross garments are lovingly crafted from premium ultra-soft superfine lambswool that feels like cashmere — soft, lightweight and luxurious. Kinross styles combine traditional techniques with signature ERIBÉ colouring, creating contemporary statement pieces that stand out from the crowd.

The land and animals are ethically cared for, with regular farm visits to support the farmers. This wool is RWS certified, meaning your customers can trust it comes from ethical, sustainable practices that prioritise fair trade, animal welfare, and land stewardship. The RWS trademark recognises the most responsible and reliable farmers worldwide.

Made in the EU with Scottish-spun yarn, fully traceable, guaranteed non-mulesed and crafted from 100% Superfine Lambswool.





KINROSS WAISTCOAT

STYLE NO: V4318

100% Superfine Lambswool / 5gg

MADE IN EU

SIZES: XS / S / M / L / XL

SLIM FIT

A vintage-inspired slim fit, V-neck waistcoat that offers a stylish, flattering silhouette, with a long rib hem that gently hugs the hips. Soft as cashmere, yet slightly thicker than the Corry collection for extra warmth and structure.

AVAILABLE IN 8 COLOURS.

MODEL IS SIZE 8UK, HEIGHT 182CMS, WEARING SIZE M

The KINROSS Colours

WAISTCOAT



Chakra



Flame



Melissa



Latte



Pistachio



Blush



Loden



Prelude



ALPINE SHORT SWEATER / WISTERIA
ALPINE CLASSIC SWEATER / PRIMROSE

The ALPINE

Our Iconic ERIBÉ Collection.

The Alpine is a stylish, colourful, cosy knit, rich in Scottish history offering a modern vibrant approach in its colours. An eye-catching addition to your store's interior layout. Customers love the comfort and luxury of the fine micron, woollen spun Merino yarn, the meticulous attention to detail, unique number of colours and construction of the beautiful Fairisle yoke. The design inspiration for this collection comes from late 18th century handknit found in the very North of Scotland. The design is technically complex requiring high levels of hand skills.





ALPINE SWEATER *Classic*

STYLE NO: P3974

96% Merino Lambswool 4% Angora / 7gg

MADE IN EU

SIZES: XS / S / M / L / XL / XXL

REGULAR FIT

A Fairisle patterned yoke sweater featuring double patterned detail on the hem and cuffs, finished with a touch of luxurious Angora in the yoke for added indulgence and a soft, textured feel. Designed with an extra-long cuff to keep hands warm and a gently shaped waist for a flattering fit.

AVAILABLE IN 16 COLOURS.

MODEL IS SIZE 6-8UK, HEIGHT 171CMS, WEARING SIZE M



ALPINE SHORT SWEATER

STYLE NO: P4250

100% Merino Lambswool from Yorkshire / 7gg

MADE IN EU

SIZES: XS / S / M / L / XL / XXL

SLIM FIT

The short sweater features Fairisle pattern detailing on the shoulders and cuffs, with a hip-length cut and long cuffs for added warmth. Designed to sit with high-waisted trousers, skirts, and dresses, it offers a flattering fit for a shorter body length.

AVAILABLE IN 16 COLOURS.

MODEL IS SIZE 8UK, HEIGHT 162CMS, WEARING SIZE M



ALPINE CARDIGAN *Classic*

STYLE NO: C3735

96% Merino Lambswool 4% Angora / 7gg

MADE IN EU

SIZES: XS / S / M / L / XL / XXL

SLIM FIT

A Fairisle yoke cardigan with shell buttons, featuring patterned detail on the hem and cuffs, finished with a touch of luxurious angora in the yoke for added indulgence and a soft texture. Designed with an extra-long cuff to keep hands warm, and a gently shaped waist for a flattering fit.

AVAILABLE IN 16 COLOURS.

MODEL IS SIZE 10-12UK, HEIGHT 180CMS, WEARING SIZE M



ALPINE SHORT CARDIGAN

STYLE NO: C4249

100% Merino Lambswool from Yorkshire / 7gg

MADE IN EU

SIZES: XS / S / M / L / XL / XXL

SLIM FIT

The short cardigan features Fairisle pattern detailing on the shoulders and cuffs, with a hip-length cut, long cuff and shell buttons. Designed to sit with high-waisted trousers, skirts and dresses, it offers a flattering fit for a shorter body length.

AVAILABLE IN 16 COLOURS.

MODEL IS SIZE 8UK, HEIGHT 168CMS, WEARING SIZE M



The ALPINE Colours

CLASSIC SWEATER / CLASSIC CARDIGAN
SHORT SWEATER / SHORT CARDIGAN



Grace



Ophelia



Whisper



Snapdragon



Sunflower



Eden



Primrose



Amelia



Wisteria



Sweetpea



Fern



Thistle



Hazel



Oakley



Honey



Tyrian



ALPINE OVERSIZED SWEATER

STYLE NO: P4419

100% Merino Lambswool / 7gg

MADE IN EU

SIZES: XS/S, M/L, XL/XXL

OVERSIZED FIT

New to the collection, this style is a subtle development from the original Breeze Sweater. Designed with the same relaxed, oversized fit, it offers an easy, casual silhouette that pairs well with any outfit. The main update is a slightly wider sleeve, adding more comfort which works excellently for women looking for an oversize to pair with any outfit.

AVAILABLE IN 4 COLOURS.

MODEL IS SIZE 10-12UK, HEIGHT 180CMS, WEARING SIZE M



ALPINE HALF SLEEVE SWEATER

STYLE NO: P4439

100% Merino Lambswool / 7gg

MADE IN EU

SIZES: XS/S, M/L, XL/XXL

OVERSIZED FIT

Our brand new Half Sleeve Sweater with our iconic Alpine yoke will be a firm favourite for all climates and transitional seasons. With its loose, boxy fit, it pairs well over dresses, skirts and trousers alike. The flattering and feminine, loose fit means it can be worn easily in warmer weather on its own or in cooler climates styled with a long sleeve underneath.

AVAILABLE IN 8 COLOURS.

MODEL IS SIZE 6-8UK, HEIGHT 171CMS, WEARING SIZE M



The ALPINE Colours

ALPINE OVERSIZED SWEATER



Snapdragon



Whisper



Fern



Thistle

ALPINE HALF SLEEVE SWEATER



Whisper



Wisteria



Primrose



Honey



Fern



Sunflower



Sweetpea



Tyrian



ALPINE HOODY

STYLE NO: P4255

100% Merino Lambswool / 7gg

MADE IN EU

SIZES: XS / S / M / L / XL / XXL

REGULAR FIT

A refreshingly sporty take on our Fairisle classic, featuring with extra-long cuffs, a hood and knitted ties. The Fairisle and tweed pattern appears around the shoulders only. No pockets.

AVAILABLE IN 4 COLOURS.

MODEL IS SIZE 8UK, HEIGHT 162CMS, WEARING SIZE M



The ALPINE Colours

ALPINE HOODY



Tyrian



Grace



Snapdragon



Fern





SUSTAINABILITY

Since the beginning (in 1986), ERIBÉ has been mindful of the environment, choosing to use the best ecological natural yarns and promote sustainable fashion in every collection. Our colourful knitwear never goes out of style. In a world of throw-away clothing, this is slow fashion at its very best, our products are designed to last.

Embedded in our 40-year ERIBÉ culture is a deep-rooted commitment to using, re-using, recycling, sharing and donating. We have always been an eco-first business, where waste is simply unacceptable. Wool is nature's miracle fibre. By choosing wool first, we encourage sustainability, it's renewable, biodegradable and traceable. In short, we create beautiful clothes with a responsible and positive environmental impact.

FOR MORE INFORMATION ON THE UNIQUE PROPERTIES OF WOOL AND WHAT MAKES IT ONE OF THE BEST FIBRES FOR SUSTAINABLE, LOW IMPACT CLOTHING VISIT:

WWW.WOOLMARK.COM/ENVIRONMENT/OUR-VISION

WWW.WOOLMARK.COM/ENVIRONMENT/FASHIONS-ENVIRONMENTAL-IMPACT

WWW.CAMPAIGNFORWOOL.ORG/ABOUT-WOOL WWW.CAMPAIGNFORWOOL.ORG/WHYWOOLMATTERS

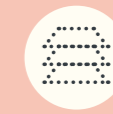
Below are just some of the steps we have taken to reduce our environmental impact across all areas of the business. We are constantly seeking to improve our sustainability to help us achieve our environmental goals.



RAW MATERIALS

We use yarn which breaks down into its component parts at the end of its life and can even be composted. The many unique properties of natural wool make it one of the best sustainable fibres:

- 100% NATURAL
- BIODEGRADABLE
- RENEWABLE AND SUSTAINABLE
- STRONG AND DURABLE
- LOW CARBON IMPACT
- RECYCLABLE



MANUFACTURING

We use green energy produced by solar panels to power our factory. Our state-of-the-art washing machines (used for 20% of our collection) use minimal water and soft Scottish water reduces the amount of chemicals required.

The high spin cycle has reduced drying time. Faulty garments are mended wherever possible to prevent re-making.

Our suppliers and manufacturing partners are chosen for their high environmental standards and ethical working practices.



PACKAGING

We use pins and cotton strings to attach swing tags rather than plastic kimbles. We have replaced our plastic garment bags with biodegradable alternatives that leave zero harmful waste or microplastics behind.



REDUCING WASTE

We only make to order, unlike fast fashion retailers who often overproduce, leading to excess stock that must be heavily discounted or sent to landfill. Knitting is much kinder than cut & sew in woven fabrics. Nearly all of the raw material is used, as each garment panel is knitted to size, resulting in virtually zero waste.



RE-USE & RE-CYCLE

Faulty panels are either re-wound back into yarn for future knitting or repurposed into new products. We also make use of surplus yarn and discontinued colours by creating scarves and garments, which are sold at discounted prices or donated to charities.



DESIGN

Our timeless knitwear is designed to outlast short-lived fashion trends. We thoughtfully build on proven designs with fresh colours and only introduce new styles we know our customers will love. Every element, from our yarn to our buttons and trimmings, is carefully selected to minimise environmental impact.

Size INFORMATION

ERIBÉ uses size labels 'XS-XXL' but as a rough guide, these relate to national sizes (see below). We also offer 'split sizing' on certain styles, which fall between the two 'full' sizes, the wear of the smaller size is a snugger fit, and the larger is more relaxed.

WOMENS

ERIBÉ SIZES	XS	S	M	L	XL	XXL
UK / AUS	6-8	8-10	10-12	12-14	14-16	16-16
EUROPEAN	36	38	40	42	44	46
US	4-6	6-8	8-10	10-12	12-14	14-16

We offer a range of different fits dependent on individual styles, each with the approximate measurements as the charts below. Some styles will differ, such as 'longline' styles with added length. Due to the natural properties of wool, guideline for size, tolerance up to 2cm.



WOMEN'S SLIM FIT

STYLES:

ALPINE CARDIGAN, ALPINE SHORT CARDIGAN, ALPINE SHORT SWEATER, KINROSS WAISTCOAT, SOLWAY LACE CARDIGAN, SOLWAY LACE SWEATER, VAILA LACE CARDIGAN, VAILA LACE SWEATER.

ERIBÉ SIZES	XS	S	M	L	XL	XXL
CHEST WIDTH	41CM	44CM	47CM	50CM	53CM	56CM

WOMEN'S REGULAR FIT

STYLES:

ALPINE SWEATER, ALPINE HOODY SWEATER, STICHILL SHORT SLEEVE SWEATER, STICHILL SLEEVELESS TOP, STICHILL LONG SLEEVE SWEATER, STICHILL V-NECK CARDIGAN.

ERIBÉ SIZES	XS	S	M	L	XL	XXL
CHEST WIDTH	44CM	47CM	50CM	53CM	56CM	59CM

WOMEN'S RELAXED FIT

STYLES:

ALPINE OVERSIZED SWEATER, ALPINE SHORT SLEEVE SWEATER, CORY V-NECK TANK TOP, MONTROSE TOP.

ERIBÉ SIZES	XS	S	M	L	XL	XXL
CHEST WIDTH	48CM	51CM	54CM	58CM	61CM	64CM

FOR SIZING PURPOSES, THE MODELS ARE BETWEEN SIZES 6 -12UK AND ARE ALL WEARING ERIBÉ SIZE MEDIUM, SEE INDIVIDUAL IMAGES FOR DETAILS

PLEASE NOTE: ALL SIZE CHARTS SHOWN ARE A GUIDELINE ONLY. FOR MORE DETAILED SIZE GUIDES, PLEASE REFER TO OUR TRADE PORTAL.

Caring for your ERIBÉ KNITWEAR

It is perfectly normal that when you first wear a pure wool garment, loose fibres near the surface rub together during movement and form little balls of wool known as pilling or bobbling. We have put together this simple guide to help you beat the bobbles and keep your ERIBÉ garment looking fantastic for many years to come...



HANDWASH IS BEST

THIS IS THE GENTLEST WAY TO WASH YOUR KNITWEAR AND THE BEST WAY TO AVOID SHRINKAGE AND MINIMISE PILLING. WASH BY HAND IN TEPID WATER.



WASH INSIDE OUT

ANY PILLING CAUSED BY WASHING WILL BE ON THE INSIDE NOT THE OUTSIDE.



USE LIQUID SOAP

ADD A SMALL AMOUNT OF LIQUID HAND SOAP AND SOAK THE GARMENT IN LUKEWARM WATER FOR 5 MINUTES. NEVER USE REGULAR WASHING DETERGENT AS THIS CAN DAMAGE THE FIBRES.



SQUEEZE, DON'T RUB

TO WASH THE GARMENT YOU MUST GENTLY SQUEEZE, WITHOUT RUBBING, THE GARMENT IN THE WATER. LAY YOUR DAMP GARMENT ON A LARGE BATH TOWEL. GENTLY ROLL THE TOWEL AND THE GARMENT TOGETHER MUCH LIKE A SWISS ROLL TO REMOVE THE EXCESS WATER.



AIR DRY FLAT

PULL GENTLY TO SIZE AND ALLOW TO DRY FLAT ON A CLEAN TOWEL AWAY FROM DIRECT HEAT SOURCES SUCH AS RADIATORS. WHEN DRY, PRESS TO SHAPE USING A DAMP TOWEL OR LIGHTLY STEAM BY HOLDING A STEAM IRON JUST ABOVE THE SURFACE OF THE GARMENT.



REMOVE ANY PILLING

WHEN THE GARMENT IS COMPLETELY DRY, GENTLY REMOVE THE SMALL PILLS EITHER BY HAND OR WITH A HAND-HELD SWEATER COMB – NEVER USE SCISSORS. BY DOING THIS AFTER EACH OF THE FIRST 3-4 WASHES, YOU WILL FIND THAT THE PILLING SUBSIDES AND WILL EVENTUALLY DISAPPEAR.

Forward ORDERING DEADLINES : 2027 onwards

At ERIBÉ, all garments are created on a made-to-order basis. This means that once your selection is confirmed, each piece is individually crafted with care specifically for you. Due to the handcrafted nature of our knitwear and our use of high-quality natural fibres, which must be pre-purchased, production requires several months to complete.

To secure a place in our production schedule, we recommend submitting your requirements as early as possible. Our capacity is limited, and we may need to close our booking window once we reach full workload, or alternatively offer delivery dates later than initially requested. With our extensive range of styles and colourways, we also provide phased delivery options.

As availability and timing may evolve, please refer to your Agent or Sales contact for the most current information, and ensure you are subscribed to our newsletter for updates on production windows and new opportunities throughout the season.

CHAPTER ONE : 2027 ORDER DEADLINES

FULL COLLECTION

Order by 15th September 2026 and choose your own delivery month from February 2027 - May 2027.

Order as early in the sales window as possible to secure your preferred delivery month and allocation of garments

WORKING WITH ERIBÉ IN 2027

- There is a minimum of 2 pcs per colour on all products ordered.
- £2,000 / €2,000 / \$4,000 AUS minimum spend to order with us.
- New customers will be on proforma terms and can apply for 30-day credit terms following first year review.
- Payments must be made in the currency on the invoice, and to the corresponding bank account.
- Orders totalling over £2,500 / €3,000 come with free carriage within the EU.
- Customer will have 7 days from receipt of order confirmation, or by the next order deadline, whichever is sooner to check any discrepancies, thereafter the order will be deemed accepted and confirmed.
- If customer cancels order more than 8 working days after receiving confirmation, they are responsible to pay a cancellation cost valued at 30% of their order.

If the customer order is received less than 8 days before the deadline, the number of days to cancel is reduced accordingly – orders cannot be changed or cancelled more than one day after the order deadline.

PLEASE SEE FULL TERMS AND CONDITIONS OF ORDERING FOR FULL DETAILS.

HOW TO CONTACT ERIBÉ

SALES / DESIGN / MARKETING / ACCOUNTS / SHOWROOM / DESPATCH / MANUFACTURING

ERIBÉ Knitwear Ltd, Rose House, Dingleton Road, Melrose, TD6 9QY Scotland, UK.

SALES ENQUIRIES: +44 (0)1896 755540 EMAIL: sales@eribe.com

ALL OTHER ENQUIRIES: +44 (0)1896 750952

Placing an ORDER

Please contact sales@eribe.com to get your sign in details and user guide for our Trade Portal.
View images of all styles and prices in your currency on your own private account.

To place an order and for details on how to set up your own ERIBÉ Trade Portal account please contact:

Tel: +44 (0)1896 755540 Email: sales@eribe.com

AGENTS - UK, EUROPE AND BEYOND



SOUTHERN ENGLAND
CONTACT: Andy Nicholls
TEL: 07967 096 734 EMAIL: andy@eribe.com



SPAIN / RAMON MONTIEL GOMEZ
CONTACT: Ramon Montiel
ADDRESS: c. Sepulveda,185, 2-2a 08011 Barcelona, Spain
TEL: (+34) 93 451 21 94 / MOB: (+34) 670 09 38 77
EMAIL: rmontiel740@gmail.com
www.luxknitshowroom.com



ITALY / HEDA SHOWROOM MILANO
CONTACT: Hera Colombo / Daniele Zanardi
EMAIL: h.colombo@heda.it MOB: +39 331 8997882
EMAIL: d.zanardi@heda.it MOB: +39 347 2820751
SHOWROOM TEL: +39 02 54123995
EMAIL: showroom@heda.it
ADDRESS: Heda Showroom, Via Macedonio Melloni 37 20129 Milano
Insta: @heda.showroom



AUSTRIA / FREE MOUNTAIN GMBH
CONTACT: Andreas Schmied
ADDRESS: Rupertgasse 4, 5020 Salzburg, Austria
TEL: +43 662 876 108 / MOB: +43 664 2230 640
EMAIL: office@freemountain.at / www.freemountain.at



SOUTH GERMANY I AGENTUR ELKE WIRICHS
CONTACT: Elke Wirichs
ADDRESS: Heinrich-Kley-Str. 12, 80807 München Schwabing, Germany
TEL: +49 89 3230 8100 / MOB: +49 177 3236 627
EMAIL: info@elke-wirichs.com / www.elke-wirichs.com

NORTH GERMANY I WOLLAGENTEN - AGENTUR MUMME
CONTACT: Carsten Mumme
ADDRESS: Kaethe-Kollwitz-Str. 115, 04109 Leipzig, Germany
TEL: +49 151 4190 5377 EMAIL: post@wollagenten.de
www.wollagenten.de



DENMARK / SWEDEN / AN APPAREL AGENCY
CONTACT: Sophie Vang
ADDRESS: Baunevej 19, 3400 Hillerød, Denmark
TEL: +45 53 73 10 11
EMAIL: sophie@anapparel.agency



NORWAY / HELENE AABY AGENTURER
CONTACT: Helene Aaby
TEL: +47 913 03 037 EMAIL: helene@aabyaagenturer.no
Insta: @heleneaabyagenturer



THE NETHERLANDS / MAAK! FASHION AGENCY
CONTACT: Lucas Hubrecht & Akke Ottenbros
ADDRESS: Utrechtseweg 186, 6862 AV Oosterbeek (Nederland)
TEL: +31 (0) 644 100 659 EMAIL: info@maakagency.nl
www.maakagency.nl



SWITZERLAND / THE FERRARI AGENCY
CONTACT: Heidi & Peter Ferrari
ADDRESS: Muehlethalstrasse 17, 4800 Zofingen, Switzerland
TEL: +41 076 587 61 53 / TEL: +41 076 593 88 67
EMAIL: theferrariagency@gmail.com
www.theferrariagency.com



FRANCE / CLB FASHION
CONTACT: Luc Bouttier
ADDRESS: 4 Rue du Cardinal Mercier, Paris, 75009, France
TEL: +33 1 45 63 04 42 / MOB: +33 6 09 75 67 87
EMAIL: clb@clbfashion.com | www.clbfashion.com



AUSTRALIA & NEW ZEALAND / LE BUREAU FASHION MARKETING
CONTACT: Kim Amber Rossouw
ADDRESS: Suite 7, 112 McEvoy Street, Alexandria, NSW 2015, Sydney
TEL: +61 (02) 96984450 / MOB: +61 (0) 407227659
EMAIL: kim@lebureauofashion.com | www.lebureauofashion.com



ERIBÉ[®]
KNITWEAR DESIGN · SCOTLAND

ROSE HOUSE, DINGLETON ROAD, MELROSE,
SCOTTISH BORDERS, UK TD6 9QY
TEL: +44 (0)1896 755540
EMAIL: SALES@ERIBE.COM

WWW.ERIBE.COM
INSTAGRAM: @ERIBE.KNITWEAR