

ERIBÉ®

CHAPTER TWO : AW 2026/27





Hello from SCOTLAND!

I'm so delighted to share Chapter Two: Autumn Winter 2026 - a fresh new era for ERIBÉ. After nearly forty years designing knitwear, this collection feels especially meaningful. We've taken a thoughtful look at everything we do, listening closely to your feedback and drawing on the latest trends to refine, refresh, and realign our designs with what your customers truly love.

Chapter Two celebrates the ERIBÉ signature - modern Scottish knitwear that blends craftsmanship, comfort, and joyful colour. Expect timeless shapes, refined details, and colourways inspired by our Highlands landscape - heather, moss, and sky - chosen to bring warmth and happiness wherever they're displayed or worn.

To our wonderful stockists around the world - from bustling cities to quiet coastal shops - thank you for being part of our journey. Your enthusiasm inspires us daily, and this new collection is designed to support your continued success.

I hope you'll feel the same spark of excitement and optimism that we do. Here's to a cosy, colourful, and prosperous season ahead.

Warmly,

Rosemary Eibé

Founder & Creative Director
ERIBÉ Knitwear



OUR YARNS

ERIBÉ is all about the people involved; from our wonderful in-house team, wool producers, spinners, mills and suppliers, to our agents, buyers and customers. We place great importance on every person involved in our supply chain, ensuring the highest standards of ethical production throughout.

All our woollen yarns are:

Ethically sourced from leading producers who handle the fibre with passion and care at every stage of the process.

Mulesing free, protecting animal welfare and preventing “fly strike” through humane methods.

Dyed according to EU REACH and OEKO-TEX® regulations, ensuring safety for people and the environment.

Majority are certified to RWS (Responsible Wool Standard) and Control Union standards.



KIND TO ANIMALS



ENVIRONMENTAL & SUSTAINABLE



QUALITY ASSURED



ALWAYS TRACEABLE



SOCIALLY RESPONSIBLE



NON-MULESED WOOL



MERINO LAMBSWOOL

The Merino Lambswool we use for our ALPINE, STOBO, CORRY, MONTROSE and STONEYBREK styles is spun in Yorkshire by a family-owned company who have been spinning yarn for over 200 years. The fibre is dyed before it is spun, a gentle process that gives a superior colour result and beautifully soft handle. They source natural fibres that meet the highest standards of animal welfare and take sustainability seriously. Their Yorkshire mill uses energy-efficient technology to reduce power consumption, and all wood, paper, plastic, metal and fibre waste is fully recycled.

SUPERFINE LAMBSWOOL & EXTRAFINE MERINO

KINROSS garments along with our new SOLWAY LACE and ARAN CABLE styles, are made using a premium, Scottish-spun, fully traceable, and guaranteed non-mulesed RWS Certified superfine Lambswool. This yarn is soft, lightweight, and sustainably produced. The spinner uses water drawn from nearby Loch Leven. The dyes used are environmentally friendly, and after dyeing, the water is thoroughly cleaned and returned to the loch – a protected nature reserve for birds and fish. MELROSE garments are crafted from a luxurious extrafine Merino, offering an even softer and lighter finish. This yarn is sourced from exceptionally fine Merino wool for comfortable wear in all weather conditions. It is also Responsible Wool Standard Certified, fully traceable and ethically produced.



SOFT SHETLAND

The Responsible Wool Standard (RWS) aims to improve the welfare of sheep and the land they graze on. It requires certification for all sites along the supply chain, from wool farmers to the final business-to-business seller. RWS farmers must meet strict standards for animal welfare, land management, and social responsibility.

Our Soft Shetland wool is spun in Yorkshire using New Zealand wools sourced from suppliers who uphold the highest animal welfare practices in the farming of their sheep, ensuring they are mulesing-free. All dyes and chemicals used in the manufacturing process comply with the latest EU REACH and OEKO-TEX® regulations.



LUXURY SOFT YARNS

Our mohair is sourced responsibly through partners who ensure ethical and sustainable farming practices, with full traceability and high standards of animal welfare. The angora used in our classic Alpines is ethically sourced and of the very best quality.



STOBO GRAFFITI SWEATER / BRAW

CHAPTER TWO : AW 2026/27



The ALPINE
Page 8



The MONTROSE
Page 14



The STONEYBREK
Page 20



The WESTRAY
Page 22



The KINROSS
Page 26



The STOBO
Page 30



The CORRY
Page 34



The TWEED NEP
Page 38



The VAILA LACE
Page 42



The BRORA
Page 46



The BRODIE
Page 50



The BRUAR
Page 54



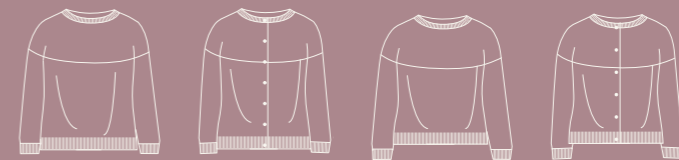
The ACCESSORIES
Page 98



The ALPINE

Our Iconic ERIBÉ Collection.

The Alpine is a stylish, colourful, cosy knit, rich in Scottish history offering a modern vibrant approach in its colours. An eye-catching addition to your store's interior layout. Customers love the comfort and luxury of the fine micron, woollen spun Merino yarn, the meticulous attention to detail, unique number of colours and construction of the beautiful Fairisle yoke. The design inspiration for this collection comes from late 18th century handknit found in the very North of Scotland. The design is technically complex requiring high levels of hand skills.





ALPINE SWEATER *Classic*

STYLE NO: P3974

96% Merino Lambswool 4% Angora / 7gg

MADE IN EU

SIZES: XS / S / M / L / XL / XXL

REGULAR FIT

A Fairisle patterned yoke sweater featuring double patterned detail on the hem and cuffs, finished with a touch of luxurious Angora in the yoke for added indulgence and a soft, textured feel. Designed with an extra-long cuff to keep hands warm and a gently shaped waist for a flattering fit.

AVAILABLE IN 7 COLOURS WITH COMPLEMENTARY ACCESSORIES



ALPINE SHORT SWEATER

STYLE NO: P4250

100% Merino Lambswool from Yorkshire / 7gg

MADE IN EU

SIZES: XS / S / M / L / XL / XXL

SLIM FIT

The short sweater features Fairisle pattern detailing on the shoulders and cuffs, with a hip-length cut and long cuffs for added warmth. Designed to sit with high-waisted trousers, skirts, and dresses, it offers a flattering fit for a shorter body length.

AVAILABLE IN 7 COLOURS WITH COMPLEMENTARY ACCESSORIES



ALPINE CARDIGAN *Classic*

STYLE NO: C3735

96% Merino Lambswool 4% Angora / 7gg

MADE IN EU

SIZES: XS / S / M / L / XL / XXL

SLIM FIT

A Fairisle yoke cardigan with shell buttons, featuring patterned detail on the hem and cuffs, finished with a touch of luxurious Angora in the yoke for added indulgence and a soft texture. Designed with an extra-long cuff to keep hands warm, and a gently shaped waist for a flattering fit.

AVAILABLE IN 7 COLOURS WITH COMPLEMENTARY ACCESSORIES



ALPINE SHORT CARDIGAN

STYLE NO: C4249

100% Merino Lambswool from Yorkshire / 7gg

MADE IN EU

SIZES: XS / S / M / L / XL / XXL

SLIM FIT

The short cardigan features Fairisle pattern detailing on the shoulders and cuffs, with a hip-length cut, long cuff and shell buttons. Designed to sit with high-waisted trousers, skirts and dresses, it offers a flattering fit for a shorter body length.

AVAILABLE IN 7 COLOURS WITH COMPLEMENTARY ACCESSORIES



The ALPINE Colours

CLASSIC SWEATER / CLASSIC CARDIGAN
SHORT SWEATER / SHORT CARDIGAN



Grace



Cherry



Taurus



Thistle



Tyrian



Oakley



Hazel



ALPINE CLASSIC CARDIGAN / OAKLEY



MONTROSE COWL NECK SWEATER / SAGE

The MONTROSE

Three relaxed-fit knits in eye-catching designs and solid colours, easy to wear and featuring unique vertical pattern details such as Guernsey rib, tweed textures and the special 'Milkchurn' Fairisle pattern. Made from 100% Merino lambswool, this knitting technique creates a flattering drape, offering both comfort and individuality in the Blanket Coat, Cowl Neck Sweater and featuring the new top style.





MONTROSE BLANKET COAT

STYLE NO: C4141

100% Merino Lambswool / 7gg

MADE IN EU

ONE SIZE (CHEST: 80CM, LENGTH: 77CM)

OVERSIZED FIT

A versatile mid-thigh length garment that can be worn as a coat, jacket or throw-on, featuring practical deep pockets. Turn it upside down for extra warmth around the shoulders or wear it elegantly as a shrug over a dress. This piece can be styled like a blanket, making it ideal for temperature-changing moments, a wonderful live-in garment for all occasions.

AVAILABLE IN 3 COLOURS.



The MONTROSE Colours

BLANKET COAT / COWL NECK SWEATER / TOP



Mushroom



Sage



MONTROSE COWL NECK SWEATER

STYLE NO: P4332

100% Merino Lambswool / 7gg

MADE IN EU

ONE SIZE (WIDTH: 88CM, FRONT BODY LENGTH: 65CM)

OVERSIZED FIT

Providing effortless elegance and comfort for all body shapes, this versatile mid-thigh length throw-over sweater features a loose yet cosy cowl neck and a flattering draped design. A beautiful mix of Fairisle, tweed and tasteful colour-block patterns compliments every skin tone. Styled like a blanket, it's perfect for temperature-changing moments – a wonderful live-in piece for all occasions.

AVAILABLE IN 3 COLOURS.



Bracken



MONTROSE TOP

STYLE NO: P4397

100% Merino Lambswool / 7gg

MADE IN EU

SIZES: SHORT (FRONT BODY LENGTH: 52.5cm)

TALL (FRONT BODY LENGTH: 58cm)

OVERSIZED FIT

A must-have garment that you can throw on for effortless comfort and style. This versatile hip-length top features a loose, flattering draped shape and short sleeves with subtle Fairisle and tweed pattern details. It offers lightweight warmth and a universally flattering fit. Available in two sizes, designed according to height.

AVAILABLE IN 3 COLOURS.



MONTROSE BLANKET COAT / SAGE

The STONEYBREK

The Stoneybrek sweater combines the comfort and warmth of beautifully soft Merino lambswool with signature ERIBÉ styling to create a year-round staple you'll turn to time and time again. Featuring a flattering circular Fairisle yoke and a chunky hand-knit appearance, the Stoneybrek is ideal for outdoor activities or relaxing at home.

Made in the EU.



STONEYBREK SWEATER

STYLE NO: P3987

SIZES 100% Merino Lambswool / 5gg

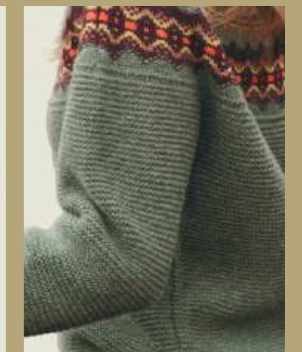
MADE IN EU

SIZES: XS / S / M / L / XL / XXL

RELAXED FIT

A round-neck sweater featuring a distinctive graphic yoke for a hand-knitted look. Warm, comfortable and effortless.

AVAILABLE IN 4 COLOURS.



The STONEYBREK Colours



Sandstorm



Grace



Velvet Woods



Highland

The WESTRAY

A true heritage icon without the heavy weight and scratchy handle. The colours and patterns are blended to reflect Scotland's natural beauty. Inspired by traditional Fairisle designs and handknit techniques from Shetland, in the far northeast of Scotland. Crafted from a modern version of Shetland wool, it offers a contemporary Scottish look and feel. The soft wool naturally moulds to your body over time — or size up if you prefer a looser fit. These authentic Scottish garments are made in Scotland in our own factory.



WESTRAY CARDIGAN

STYLE NO: C4199

100% Soft Shetland Wool / 5gg

MADE IN SCOTLAND

SIZES: XS / S / M / L / XL

REGULAR FIT

An over-hip length Fairisle cardigan with horn buttons and traditional striped pattern detailing on the hem and cuffs. Knitted in 100% soft Shetland wool, it offers warmth, comfort, and timeless style.

AVAILABLE IN 6 COLOURS.



WESTRAY SWEATER

STYLE NO: P4202

100% Soft Shetland Wool / 5gg

MADE IN SCOTLAND

SIZES: XS / S / M / L / XL

REGULAR FIT

An over-hip length Fairisle sweater featuring traditional striped accents on the hem and cuffs. Knitted in 100% soft Shetland wool for a comfortable, timeless finish.

AVAILABLE IN 6 COLOURS.S.



The WESTRAY Colours

SWEATER / CARDIGAN / VEST



Roslyn



MacDuff



Balmoral



Huntley



Erica



Aberfoyle



WESTRAY VEST

STYLE NO: V4247

100% Soft Shetland Wool / 5gg

MADE IN SCOTLAND

SIZES: XS / S / M / L / XL

REGULAR FIT

A Fairisle vest with scoop round neck and straight silhouette, featuring traditional striped detailing on the hem and armholes. Knitted in soft Shetland wool for a comfortable classic finish.

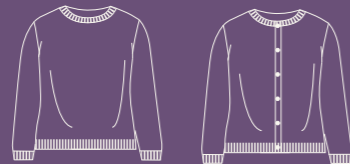
AVAILABLE IN 6 COLOURS.

The KINROSS

Inspired by the natural beauty of our Scottish landscape and traditional patterns from Shetland and Fair Isle. Kinross garments are lovingly crafted from premium ultra-soft superfine lambswool that feels like cashmere — soft, lightweight and luxurious. Kinross styles combine traditional techniques with signature ERIBÉ colouring, creating contemporary statement pieces that stand out from the crowd.

The land and animals are ethically cared for, with regular farm visits to support the farmers. This wool is RWS certified, meaning your customers can trust it comes from ethical, sustainable practices that prioritise fair trade, animal welfare, and land stewardship. The RWS trademark recognises the most responsible and reliable farmers worldwide.

Made in the EU with Scottish-spun yarn, fully traceable, guaranteed non-mulesed and crafted from 100% Superfine Lambswool.



KINROSS SWEATER

STYLE NO: P4218

100% Superfine Lambswool / 5gg

MADE IN EU

SIZES: S / M / L / XL / XXL

REGULAR FIT

An ultra-soft, colourful Fairisle sweater crafted from premium, superfine lambswool. Features distinctive striped trims and graphic motifs inspired by traditional hand-knitted Shetland Fairisles. Authentic floats on the inside of the garment provide an extra layer of warmth.

AVAILABLE IN 6 COLOURS.



KINROSS CARDIGAN

STYLE NO: C4302

100% Superfine Lambswool / 5gg

MADE IN EU

SIZES: S / M / L / XL / XXL

REGULAR FIT

Cardigan version of our ultra soft Fairisle Kinross Sweater, finished with horn buttons and traditional striped pattern detail on the hem and cuffs.

AVAILABLE IN 6 COLOURS..



The KINROSS Colours

SWEATER / CARDIGAN



Blush



Flame



Latte



Sea-holly



Loden



Prelude

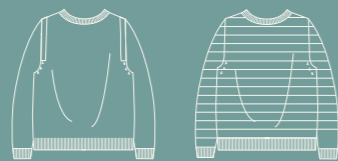


KINROSS SWEATER / LATTE

The STOBO

There is a bright, infectious joy in our new Stobo garments. Combining Fairisle, stripes and unique colour combinations, they bring an uplifting, stylish feel to your look and a skip in your step! Named after a very beautiful and colourful area in the Scottish Borders, Stobo garments feature striped and Fairisle patterns with a bold contrast colour-block stripe rib cuff.

Cleverly designed, they can be worn front to back or back to front, allowing you to choose colours or patterns to suit your mood or outfit. Made from soft 100% Merino Lambswool, spun in Yorkshire in the North of England. Available in 5 fun and versatile colourways.



STOBO STRIPE SWEATER *Reversible*

STYLE NO: P4313

100% Merino Lambswool / 7gg

MADE IN EU

SIZES: S / M / L / XL

REGULAR FIT

A striped, geometric design that captures the fun and stylish essence of ERIBÉ's signature colour combinations. The Stripe Sweater is two garments in one, offering a choice of colourful stripe combinations that can be worn to the front. It features a round neck shaped for comfort and distinctive contrasting rib cuffs that add a touch of flair.

AVAILABLE IN 3 COLOURS



STOBO GRAFFITI SWEATER *Reversible*

STYLE NO: P4383

100% Merino Lambswool / 7gg

MADE IN EU

SIZES: S / M / L / XL

REGULAR FIT

Where heritage meets daring design, this Fairisle pattern and bold play of colour take inspiration from contemporary graffiti art. Designed for versatility, it can be worn with the pattern at the front or back, depending on your mood. Each colourway named is after a Scottish word, and the round neck is shaped for comfort whichever way you choose to wear it, letting you showcase your favourite colours every day.

AVAILABLE IN 3 COLOURS

The STOBO Colours

STRIPE SWEATER



Dapper



Braw



Crackin

GRAFFITI SWEATER



Dapper



Braw



Crackin

ERIBÉ



STOBO GRAFFITI SWEATER / BRAW

ERIBÉ

The CORRY

Our Luxe-Leisure collection is crafted from the softest 100% Merino lambswool, spun in Yorkshire. Designed for comfort and versatility, these garments are perfect for wearing on any occasion. The collection also showcases ERIBÉ's vibrant colours without pattern, adding diversity to your store display.

With sustainability at its heart, these pieces are designed to replace cotton basics and encourage conscious wearing. Wool's breathable qualities can regulate body temperature and requires less frequent washing. The source material ensures sustainability, and a far lower environmental footprint than typical cotton alternatives.



CORRY LADIES RAGLAN SWEATER

STYLE NO: P4130

100% Merino Lambswool / 7gg

MADE IN SCOTLAND

SIZES: XS / S / M / L / XL / XXL

RELAXED FIT

This ERIBÉ classic shape is inspired by the artist's smock top. Designed in a comfortable raglan style, it features adjustable collar, and hems can be rolled inside or out and lengthened or shortened to suit your style. Side splits at the hem provide extra movement and ease, making this piece both versatile and effortlessly comfortable.

AVAILABLE IN 13 COLOURS.



CORRY V-NECK TANK TOP

STYLE NO: V4232

100% Merino Lambswool / 7gg

MADE IN SCOTLAND

SIZES: XS/S, S/M, M/L, L/XL, XL/XXL

SLIM FIT / RELAXED FIT

Minimalist and functional, this V-neck Tank top features two pockets and is perfect to layer over a dress, shirt, or t-shirt for added warmth and effortless style. The dual-size design allows you to choose between slim fit or regular fit, offering versatility for every wardrobe.

AVAILABLE IN 7 COLOURS.





CORRY T-SHIRT SWEATER

STYLE NO: P4271

100% Merino Lambswool / 7gg

MADE IN SCOTLAND

SIZES: XS / S / M / L / XL / XXL

RELAXED FIT

A fine woollen long sleeve t-shirt that is soft, comfortable and flattering. With a small rib collar and no trims on cuffs or hips for easy wear and a relaxed stylish look. This garment is unisex with a boyfriend fit. For womenswear this garment can be sized down from usual size.

AVAILABLE IN 7 COLOURS.



CORRY LOFT CARDIGAN

STYLE NO: C4385

100% Merino Lambswool / 7gg

MADE IN SCOTLAND

SIZES: XS/S, M/L, XL/XXL

LOOSE FIT

A lightweight, over-the-knee length coat featuring practical extra-large pockets. The V-neck and front-edge ribs are seamlessly integrated, and all trims are kept simple for easy wear and a contemporary look. Side splits add freedom of movement for effortless layering. Pair with the matching Corry T-Shirt or V-neck tank for a modern twinset with a luxe-leisure vibe. Choose a smaller size for a shorter length.

AVAILABLE IN 5 COLOURS.



The CORRY Colours

RAGLAN SWEATER / V-NECK TANK TOP / T-SHIRT SWEATER



Starburst



Luscious Lime



Linen



Orchard



Caspian

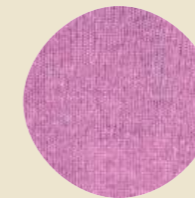


Metallic



Seaweed

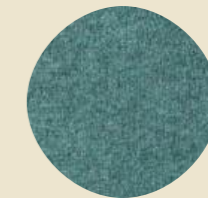
LOFT CARDIGAN



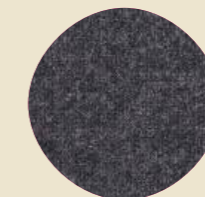
Starburst



Linen



Caspian



Metallic



Seaweed

The TWEED NEP Collections

Knitted in our modern version of Shetland wool, these collections features an exclusive ERIBÉ yarn developed from a very old and favourite garment from our archive. The yarn blends multiple colours with a distinctive tweed nep, creating a colourful speckle that adds depth, texture and a beautifully "tweedy" character. Lighter in weight than traditional Donegal yarn yet similar in handle and appearance, it's perfectly suited to today's milder climate.

Designed in a simple, utility-inspired style, the garments feature playful contrasting trims on the pockets, ribs and neckline, highlighting the colours within the yarn itself. Garter-stitched shoulders and elbow patches add a crafted touch, while the colour palette draws inspiration from the rugged Scottish landscape, bringing a nostalgic, homespun warmth to the collections. Enjoy TWEED NEP, BRORA and NORWICK LACE in this special yarn.



TWEED NEP VEST

STYLE NO: V4353

100% Soft Shetland Wool with multi coloured flecks / 5gg

MADE IN SCOTLAND

SIZES: XS / S / M / L / XL / XXL

RELAXED FIT

A versatile sleeveless vest featuring textured shoulder detailing, practical front pockets, and contrast-colour rolled trims at the hem and pocket.

AVAILABLE IN 3 COLOURS.



TWEED NEP SWEATER

STYLE NO: P4354

100% Soft Shetland Wool with multi coloured flecks / 5gg

MADE IN SCOTLAND

SIZES: XS / S / M / L / XL / XXL

RELAXED FIT

A contemporary, boxy-shaped sweater featuring subtle textured elbow patches and practical front pockets. Finished with contrast-colour rolled trims at the cuffs, neckline and pockets.

AVAILABLE IN 3 COLOURS.

The TWEED NEP Colours

VEST / SWEATER / BRORA LADIES JACKET



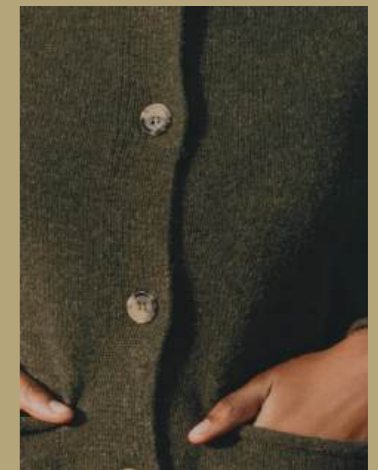
Sand



Green Lichen



Delphinium



BRORA LADIES JACKET

STYLE NO: J4361

100% Soft Shetland Wool with multi coloured flecks / 5gg

MADE IN SCOTLAND

SIZES: XS / S / M / L / XL

RELAXED FIT

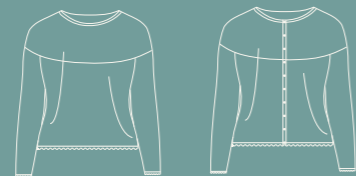
A contemporary, utilitarian jacket cut to a flattering hip length, featuring front pockets and classic horn buttons. Crafted from soft Shetland wool with subtle multi-coloured flecks, it captures the rustic charm of the Scottish landscape while offering warmth and comfort. Perfect for layering across the seasons.

AVAILABLE IN 3 COLOURS.

The VAILA LACE

Taking inspiration from vintage Shetland hand-knitted fine lace shawls, these romantic and nostalgic lace garments are a new and unique design that follows in the footsteps of ERIBÉ's iconic yoke patterns. Resembling delicate hand-knits, each intricate piece is crafted from extra-fine, lightweight Merino wool for a luxurious, airy feel.

The collection is named after Vaila, a beautiful and remote island in Shetland, north of Scotland. Situated south of the Westland peninsula of the Shetland Mainland, Vaila covers 327 hectares and is home to just one house. Rising 95 metres at its highest point, the island hosts an organic sheep farm and is also known for its mountain hares, a true reflection of Shetland's wild and unspoiled charm.



VAILA LACE SWEATER

STYLE NO: P4337

100% Merino Wool / 12gg

MADE IN EU

SIZES: S / M / L / XL / XXL

SLIM FIT

A fine lace yoke sweater, round neck with long sleeves. Beautifully made with fine merino lace knit, featuring scalloped edging on the collar, cuffs and rib, with yoke detail.

AVAILABLE IN 4 COLOURS.



VAILA LACE CARDIGAN

STYLE NO: C4377

100% Merino Wool / 12gg

MADE IN EU

SIZES: S / M / L / XL / XXL

SLIM FIT

A fine lace yoke crew neck cardigan, round neck with long sleeves and pearl button detailing. Beautifully crafted with fine merino lace knit, featuring scalloped edging on the collar, cuffs, and hem, complemented by yoke detailing.

AVAILABLE IN 4 COLOURS.

The VAILA LACE Colours

SWEATER / CARDIGAN



White



Oatmeal



Electric Red



Denim Blue



VAILA LACE CARDIGAN / WHITE



The BRORA

These stylish lightweight garments are knitted in beautiful modern Shetland and Tweed Nep yarns. The yarns are chosen for their richness and depth of colour that give a reminiscent nostalgic feel of the more rustic elements of Scotland's natural environment. The garment is styled to suit both men and women with a contemporary cut and more than a hint of traditional values.



BRORA SWEATER

STYLE NO: P4324

100% Soft Shetland Wool / 5gg

MADE IN SCOTLAND

SIZES: S / M / L / XL / XXL

REGULAR FIT / UNISEX

A classic round neck sweater with a difference: The difference is in the choice of 7 exciting colour options.

AVAILABLE IN 6 COLOURS.

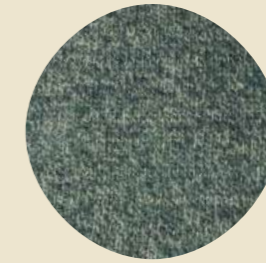


The BRORA Colours

UNISEX SWEATER



Sand



Karel



Snow



Beaver



Blackgrouse



Green Lichen



BRORA MEN'S JACKET

STYLE NO: J4357

100% Soft Shetland Wool / 5gg

MADE IN SCOTLAND

SIZES: S / M / L / XL

RELAXED FIT

A contemporary, utilitarian jacket featuring front pockets and classic horn buttons. Crafted from soft Shetland wool with subtle multi-coloured flecks, it captures the rustic charm of the Scottish landscape while offering warmth and comfort. Perfect for layering across the seasons.

AVAILABLE IN 3 COLOURS.



BRORA MEN'S JACKET



Teasel



Blackgrouse



Green Lichen



The BRODIE

Our new Brodie is designed with a contemporary plain 2/2 rib. Essential, live-in, garments with an all-over fairisle pattern for everyday style and practicality.

This Collection is inspired by original Fairisle designs and handknit techniques from the Shetland Islands in the far North East of Scotland. Knitted in a modern Shetland wool for a contemporary Scottish look and feel. This wonderful wool traps air to create natural insulation. This gently regulates your body heat, keeping you warm on colder days and comfortable when indoors.



BRODIE RIB SWEATER

STYLE NO: P4352

100% Soft Shetland Wool / 5gg

MADE IN SCOTLAND

SIZES: XS / S / M / L / XL / XXL

RELAXED FIT

A mid-weight round neck sweater in all over fairisle pattern with firm 2/2 rib hem and cuffs.

AVAILABLE IN 6 COLOURS.



The BRODIE Colours

RIB SWEATER / RIB VEST



Ash



Douglas



Woodland



Cairn



Kingfisher



Fife



BRODIE RIB VEST

STYLE NO: V4351

100% Soft Shetland Wool / 5gg

MADE IN SCOTLAND

SIZES: XS / S / M / L / XL / XXL

RELAXED FIT

A mid-weight round V-Neck vest in all over fairisle pattern with 2/2 rib trims.

AVAILABLE IN 6 COLOURS.





The BRUAR FALLS

A fresh take on our well loved Bruar sweater. The Bruar Falls collection replaces Bruar this year, same style and garment with all new yarn. The new yarn colours add complexity and texture to the look and feel of the sweater. A flattering fit, for all ages, Bruar is a versatile mid-weight knit giving an authentic, traditional look and feel.



BRUAR FALLS SWEATER

STYLE NO: P4369

100% Soft Shetland Wool / 5gg

MADE IN SCOTLAND

SIZES: XS / S / M / L / XL / XXL

REGULAR FIT

A mid weight sweater with slight upturned round neck. Stripe mock rib detail on the neck, hem and cuff for an authentic traditional look.

AVAILABLE IN 6 COLOURS.

The BRUAR FALLS Colours

SWEATER



Beaver



Teasel



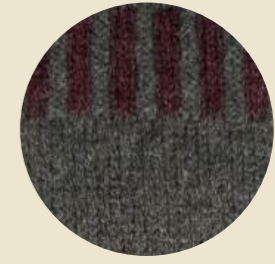
Steppa



Snow



Blackgrouse



Green Lichen



The ACCESSORIES

Our colourful scarves, wraps, hats and gloves offer an unrivalled variety of texture, colour and pattern to bring joy to your customers.

ERIBÉ's accessory collection complements the full range in both colour and design, allowing you to merchandise the accessories to suit your retail collection. The accessories add pattern to plain garments and combine stripes with Fairisle to create a contemporary feel with a heritage twist.

We offer a wide selection of colours to match all garments available.



ALLOA BEANIE

STYLE NO: H4322

100% Merino Lambswool / 7gg

MADE IN SCOTLAND

ONE SIZE

Colourblock beanie hat with Fairisle stripe detail.

AVAILABLE IN 8 COLOURS.

ALLOA GLOVES

STYLE NO: G4207

100% Merino Lambswool

MADE IN SCOTLAND

ONE SIZE

Fairisle gloves with contrast inner cuff colour.

AVAILABLE IN 8 COLOURS.

ALLOA FINGERLESS GLOVES

STYLE NO: G4321

100% Merino Lambswool / 7gg

MADE IN SCOTLAND

ONE SIZE

Graphic pattern fingerless gloves.

AVAILABLE IN 8 COLOURS.

ALLOA OPEN MITT

STYLE NO: M4206

100% Merino Lambswool / 7gg

MADE IN SCOTLAND

ONE SIZE

Fairisle patterned mitts with contrast inner cuff colour.

AVAILABLE IN 8 COLOURS.

The ALLOA ACCESSORIES Colours

BEANIE / FINGERLESS GLOVES / GLOVES / OPEN MITT



Salsa-Tango



Ebony



Hazel-Grace



Tyrian-Thistle



Charm-Bonnie



Classic



Braemar-Oakley



Velvet



ALLOA BERET

STYLE NO: H4062

100% Merino Lambswool / 7gg

MADE IN SCOTLAND

ONE SIZE

Circular knit Fairisle beret with a small pom-pom and rib hem. It can be worn like a beanie or in true French style.

AVAILABLE IN 8 COLOURS.



Classic

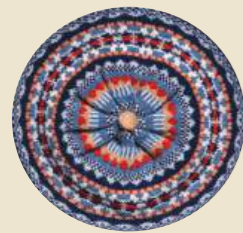
Tyrian-Thistle

Velvet

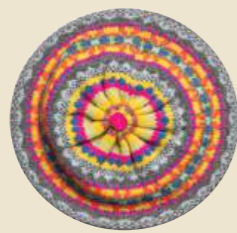
Braemar-Oakley

Charm-Bonnie

The ALLOA BERET Colours



Classic



Charm-Bonnie



Tyrian-Thistle



Ebony



Salsa-Tango



Braemar-Oakley



Hazel-Grace



Velvet



FAIRISLE SCARF

STYLE NO: S4422

100% Merino Lambswool / 7gg

MADE IN SCOTLAND

ONE SIZE (170 X 23CM)

Scottish Fairisle patterns in a kaleidoscope of ten colours, designed to match the collection and a variety of outfits. Finished with garter stitch edges and a soft handle.

AVAILABLE IN 5 COLOURS.



FAIRISLE NECKERCHIEF

STYLE NO: S4401

100% Merino Lambswool / 7gg

MADE IN SCOTLAND

ONE SIZE (85 x 31.5cm)

This charming new neckerchief, featuring our Alpine Fairisle pattern blended with two block colours, will accessorise any outfit. Wear it around your neck or head in several ways.

AVAILABLE IN 8 COLOURS.



The FAIRISLE NECKERCHIEF Colours



Charm-Bonnie



Ebony



Hazel-Grace



Tyrian-Thistle



Salsa-Tango



Classic



Braemar-Oakley



Velvet



Classic

Braemar

Starburst

Hermes

Romance



TREELINE WRAP

STYLE NO: S4152

80% Lambswool 20% Kid Mohair / 5gg

MADE IN SCOTLAND

ONE SIZE (185 x 85cm)

A beautifully soft and lightweight wrap, giving volume in subtly changing colours and block stripes with a touch of luxury super-kid mohair.

AVAILABLE IN 5 COLOURS.



SUSTAINABILITY

Since the beginning (in 1986), ERIBÉ has been mindful of the environment, choosing to use the best ecological natural yarns and promote sustainable fashion in every collection. Our colourful knitwear never goes out of style. In a world of throw-away clothing, this is slow fashion at its very best, our products are designed to last.

Embedded in our 40-year ERIBÉ culture is a deep-rooted commitment to using, re-using, recycling, sharing and donating. We have always been an eco-first business, where waste is simply unacceptable. Wool is nature's miracle fibre. By choosing wool first, we encourage sustainability, it's renewable, biodegradable and traceable. In short, we create beautiful clothes with a responsible and positive environmental impact.

FOR MORE INFORMATION ON THE UNIQUE PROPERTIES OF WOOL AND WHAT MAKES IT ONE OF THE BEST FIBRES FOR SUSTAINABLE, LOW IMPACT CLOTHING VISIT:

WWW.WOOLMARK.COM/ENVIRONMENT/OUR-VISION

WWW.WOOLMARK.COM/ENVIRONMENT/FASHIONS-ENVIRONMENTAL-IMPACT

WWW.CAMPAIGNFORWOOL.ORG/ABOUT-WOOL WWW.CAMPAIGNFORWOOL.ORG/WHYWOOLMATTERS

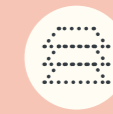
Below are just some of the steps we have taken to reduce our environmental impact across all areas of the business. We are constantly seeking to improve our sustainability to help us achieve our environmental goals.



RAW MATERIALS

We use yarn which breaks down into its component parts at the end of its life and can even be composted. The many unique properties of natural wool make it one of the best sustainable fibres:

- 100% NATURAL
- BIODEGRADABLE
- RENEWABLE AND SUSTAINABLE
- STRONG AND DURABLE
- LOW CARBON IMPACT
- RECYCLABLE



MANUFACTURING

We use green energy produced by solar panels to power our factory. Our state-of-the-art washing machines (used for 20% of our collection) use minimal water and soft Scottish water reduces the amount of chemicals required.

The high spin cycle has reduced drying time. Faulty garments are mended wherever possible to prevent re-making.

Our suppliers and manufacturing partners are chosen for their high environmental standards and ethical working practices.



PACKAGING

We use pins and cotton strings to attach swing tags rather than plastic kimbles. We have replaced our plastic garment bags with biodegradable alternatives that leave zero harmful waste or microplastics behind.



REDUCING WASTE

We only make to order, unlike fast fashion retailers who often overproduce, leading to excess stock that must be heavily discounted or sent to landfill. Knitting is much kinder than cut & sew in woven fabrics. Nearly all of the raw material is used, as each garment panel is knitted to size, resulting in virtually zero waste.



RE-USE & RE-CYCLE

Faulty panels are either re-wound back into yarn for future knitting or repurposed into new products. We also make use of surplus yarn and discontinued colours by creating scarves and garments, which are sold at discounted prices or donated to charities.



DESIGN

Our timeless knitwear is designed to outlast short-lived fashion trends. We thoughtfully build on proven designs with fresh colours and only introduce new styles we know our customers will love. Every element, from our yarn to our buttons and trimmings, is carefully selected to minimise environmental impact.

Size INFORMATION

ERIBÉ uses size labels 'XS-XXL' but as a rough guide, these relate to national sizes (see below). We also offer 'split sizing' on certain styles, which fall between the two 'full' sizes, the wear of the smaller size is a snugger fit, and the larger is more relaxed.

WOMENS

ERIBÉ SIZES	XS	S	M	L	XL	XXL
UK / AUS	6-8	8-10	10-12	12-14	14-16	16-16
EUROPEAN	36	38	40	42	44	46
US	4-6	6-8	8-10	10-12	12-14	14-16

We offer a range of different fits dependent on individual styles, each with the approximate measurements as the charts below. Some styles will differ, such as 'longline' styles with added length. Due to the natural properties of wool, guideline for size, tolerance up to 2cm.



WOMEN'S SLIM FIT

STYLES:

ALPINE CARDIGAN, ALPINE SHORT CARDIGAN, ALPINE SHORT SWEATER, KINROSS WAISTCOAT, ARAN CARDIGAN, SOLWAY LACE CARDIGAN, SOLWAY LACE SWEATER, VAILA LACE CARDIGAN, VAILA LACE SWEATER, VAILA LACE CAMISOLE.

ERIBÉ SIZES	XS	S	M	L	XL	XXL
CHEST WIDTH	41CM	44CM	47CM	50CM	53CM	56CM

WOMEN'S REGULAR FIT

STYLES:

ALPINE SWEATER, ALPINE ROLL COLLAR SWEATER, ALPINE HOODY SWEATER, WESTRAY CARDIGAN, WESTRAY SWEATER, WESTRAY VEST, KINROSS SWEATER, KINROSS CARDIGAN, KINROSS COWL NECK SWEATER, STOBO STRIPE SWEATER, STOBO GRAFFITI SWEATER, NORWICK LACE CARDIGAN, NORWICK LACE SWEATER.

ERIBÉ SIZES	XS	S	M	L	XL	XXL
CHEST WIDTH	44CM	47CM	50CM	53CM	56CM	59CM

WOMEN'S RELAXED FIT

STYLES:

ALPINE BREEZE SWEATER, STONEYBREK SWEATER, WESTRAY BLOCK SWEATER, CORRY LADIES RAGLAN SWEATER, CORRY TANK TOP, CORRY HOODY SWEATER, CORRY T-SHIRT SWEATER, CORRY LOFT CARDIGAN, MELROSE TWEED SWEATER, MELROSE TWEED CARDIGAN, MELROSE TWEED TUNIC, MELROSE TWEED DRAPE TOP, TWEED NEP SWEATER, TWEED NEP VEST, BRORA LADIES JACKET.

ERIBÉ SIZES	XS	S	M	L	XL	XXL
CHEST WIDTH	48CM	51CM	54CM	58CM	61CM	64CM

PLEASE NOTE: ALL SIZE CHARTS SHOWN ARE A GUIDELINE ONLY. FOR MORE DETAILED SIZE GUIDES, PLEASE REFER TO OUR NEW TRADE PORTAL.

Caring for your ERIBÉ KNITWEAR

It is perfectly normal that when you first wear a pure wool garment, loose fibres near the surface rub together during movement and form little balls of wool known as pilling or bobbling. We have put together this simple guide to help you beat the bobbles and keep your ERIBÉ garment looking fantastic for many years to come...



HANDWASH IS BEST

THIS IS THE GENTLEST WAY TO WASH YOUR KNITWEAR AND THE BEST WAY TO AVOID SHRINKAGE AND MINIMISE PILLING. WASH BY HAND IN TEPID WATER.



WASH INSIDE OUT

ANY PILLING CAUSED BY WASHING WILL BE ON THE INSIDE NOT THE OUTSIDE.



USE LIQUID SOAP

ADD A SMALL AMOUNT OF LIQUID HAND SOAP AND SOAK THE GARMENT IN LUKEWARM WATER FOR 5 MINUTES. NEVER USE REGULAR WASHING DETERGENT AS THIS CAN DAMAGE THE FIBRES.



SQUEEZE, DON'T RUB

TO WASH THE GARMENT YOU MUST GENTLY SQUEEZE, WITHOUT RUBBING, THE GARMENT IN THE WATER. LAY YOUR DAMP GARMENT ON A LARGE BATH TOWEL. GENTLY ROLL THE TOWEL AND THE GARMENT TOGETHER MUCH LIKE A SWISS ROLL TO REMOVE THE EXCESS WATER.



AIR DRY FLAT

PULL GENTLY TO SIZE AND ALLOW TO DRY FLAT ON A CLEAN TOWEL AWAY FROM DIRECT HEAT SOURCES SUCH AS RADIATORS. WHEN DRY, PRESS TO SHAPE USING A DAMP TOWEL OR LIGHTLY STEAM BY HOLDING A STEAM IRON JUST ABOVE THE SURFACE OF THE GARMENT.



REMOVE ANY PILLING

WHEN THE GARMENT IS COMPLETELY DRY, GENTLY REMOVE THE SMALL PILLS EITHER BY HAND OR WITH A HAND-HELD SWEATER COMB – NEVER USE SCISSORS. BY DOING THIS AFTER EACH OF THE FIRST 3-4 WASHES, YOU WILL FIND THAT THE PILLING SUBSIDES AND WILL EVENTUALLY DISAPPEAR.

Forward ORDERING DEADLINES :

June 2026 onwards

At ERIBÉ, all garments are created on a made-to-order basis. This means that once your selection is confirmed, each piece is individually crafted with care specifically for you. Due to the handcrafted nature of our knitwear and our use of high-quality natural fibres, which must be pre-purchased, production requires several months to complete.

To secure a place in our production schedule, we recommend submitting your requirements as early as possible. Our capacity is limited, and we may need to close our booking window once we reach full workload, or alternatively offer delivery dates later than initially requested. With our extensive range of styles and colourways, we also provide phased delivery options.

As availability and timing may evolve, please refer to your Agent or Sales contact for the most current information, and ensure you are subscribed to our newsletter for updates on production windows and new opportunities throughout the season.

CHAPTER TWO : 2026 ORDER DEADLINES

MARCH ORDER WINDOW

Order by 31st March for delivery October – December 2026

WORKING WITH ERIBÉ IN 2026 / 2027

- There is a minimum of 2 pcs per colour on all products ordered.
- £2,000 / €2,000 / \$4,000 AUS minimum spend to order with us.
- New customers will be on proforma terms and can apply for 30-day credit terms following first year review.
- Payments must be made in the currency on the invoice, and to the corresponding bank account.
- Orders totalling over £2,500 / €3,000 come with free carriage within the EU.
- Customer will have 7 days from receipt of order confirmation, or by the next order deadline, whichever is sooner to check any discrepancies, thereafter the order will be deemed accepted and confirmed.
- If customer cancels order more than 8 working days after receiving confirmation, they are responsible to pay a cancellation cost valued at 30% of their order.

If the customer order is received less than 8 days before the deadline, the number of days to cancel is reduced accordingly – orders cannot be changed or cancelled more than one day after the order deadline.

PLEASE SEE FULL TERMS AND CONDITIONS OF ORDERING FOR FULL DETAILS.

HOW TO CONTACT ERIBÉ

SALES / DESIGN / MARKETING / ACCOUNTS / SHOWROOM / DESPATCH / MANUFACTURING

ERIBÉ Knitwear Ltd, Rose House, Dingleton Road, Melrose, TD6 9QY Scotland, UK.

SALES ENQUIRIES: +44 (0)1896 755540 EMAIL: sales@eribe.com

ALL OTHER ENQUIRIES: +44 (0)1896 750952

Placing an ORDER

Please contact sales@eribe.com to get your sign in details and user guide for our Trade Portal.
View images of all styles and prices in your currency on your own private account.

To place an order and for details on how to set up your own ERIBÉ Trade Portal account please contact:

Tel: +44 (0)1896 755540 Email: sales@eribe.com

AGENTS - UK, EUROPE AND BEYOND



SOUTHERN ENGLAND
CONTACT: Andy Nicholls
TEL: 07967 096 734 EMAIL: andy@eribe.com



SPAIN / RAMON MONTIEL GOMEZ
CONTACT: Ramon Montiel
ADDRESS: c. Sepulveda,185, 2-2a 08011 Barcelona, Spain
TEL: (+34) 93 451 21 94 / MOB: (+34) 670 09 38 77
EMAIL: rmontiel740@gmail.com
www.luxknitshowroom.com



ITALY / HEDA SHOWROOM MILANO
CONTACT: Hera Colombo / Daniele Zanardi
EMAIL: h.colombo@heda.it MOB: +39 331 8997882
EMAIL: d.zanardi@heda.it MOB: +39 347 2820751
SHOWROOM TEL: +39 02 54123995
EMAIL: showroom@heda.it
ADDRESS: Heda Showroom, Via Macedonio Melloni 37 20129 Milano
Insta: @heda.showroom



AUSTRIA | FREE MOUNTAIN GMBH
CONTACT: Andreas Schmied
ADDRESS: Rupertgasse 4, 5020 Salzburg, Austria
TEL: +43 662 876 108 / MOB: +43 664 2230 640
EMAIL: office@freemountain.at / www.freemountain.at



SOUTH GERMANY | AGENTUR ELKE WIRICHS
CONTACT: Elke Wirichs
ADDRESS: Heinrich-Kley-Str. 12, 80807 München Schwabing, Germany
TEL: +49 89 3230 8100 / MOB: +49 177 3236 627
EMAIL: info@elke-wirichs.com / www.elke-wirichs.com

NORTH GERMANY | WOLLAGENTEN - AGENTUR MUMME
CONTACT: Carsten Mumme
ADDRESS: Kaethe-Kollwitz-Str. 115, 04109 Leipzig, Germany
TEL: +49 151 4190 5377 EMAIL: post@wollagenten.de
www.wollagenten.de



DENMARK / SWEDEN | AN APPAREL AGENCY
CONTACT: Sophie Vang
ADDRESS: Baunevej 19, 3400 Hillerød, Denmark
TEL: +45 53 73 10 11
EMAIL: sophie@anapparel.agency



NORWAY - HELENE AABY AGENTURER
CONTACT: Helene Aaby
ADDRESS: Torvveien 5, 1383 Asker, Norway
TEL: +47 913 03 037 EMAIL: helene@aabyagenturer.no
Insta: @heleneaabyagenturer



THE NETHERLANDS / MAAKI FASHION AGENCY
CONTACT: Lucas Hubrecht & Akke Ottenbros
ADDRESS: Utrechtseweg 186, 6862 AV Oosterbeek (Nederland)
TEL: +31 (0) 644 100 659 EMAIL: info@maakagency.nl
www.maakagency.nl



SWITZERLAND | THE FERRARI AGENCY
CONTACT: Heidi & Peter Ferrari
ADDRESS: Muehlethalstrasse 17, 4800 Zofingen, Switzerland
TEL: +41 076 587 61 53 / TEL: +41 076 593 88 67
EMAIL: theferrariagency@gmail.com
www.theferrariagency.com



AUSTRALIA & NEW ZEALAND | LE BUREAU FASHION MARKETING
CONTACT: Kim Amber Rossouw
ADDRESS: Suite 7, 112 McEvoy Street, Alexandria, NSW 2015, Sydney
TEL: +61 (02) 96984450 / MOB: +61 (0) 407227659
EMAIL: kim@lebureaufashion.com
www.lebureaufashion.com



ERIBÉ[®]
KNITWEAR DESIGN · SCOTLAND

ROSE HOUSE, DINGLETON ROAD, MELROSE,
SCOTTISH BORDERS, UK TD6 9QY
TEL: +44 (0)1896 755540
EMAIL: SALES@ERIBE.COM

WWW.ERIBE.COM
INSTAGRAM: @ERIBE.KNITWEAR